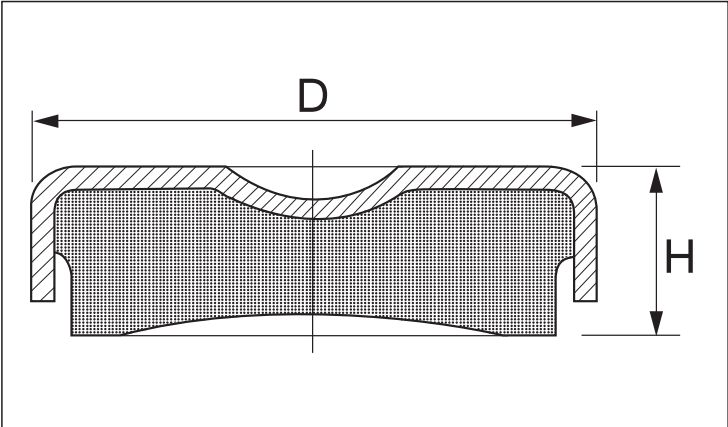


Mounting TFE™ is a simpler version of type TF™ without level adjuster. It is used for machines which do not require height adjustment or where such a feature is already provided, e.g. by an adjusting screw in the machine.



Both models also available in stainless steel.



Type	Drawing no.	Part no.	Dimensions in mm		Max Load (Kg)	Weight (Kg)
			D	H		
TFE 601	19-0571	20-00629	80	25	800	0,375
TFE 1201	19-0574	20-00630	109	29	160	0,925